

***FireAngel***<sup>®</sup>

**WI-SAFE GATEWAY**

**Wi-Safe**<sup>®</sup> **CONNECT**

**Installation Guide**

WG-1T





**FireAngel®** Wi-Safe 2

Available on all wireless products

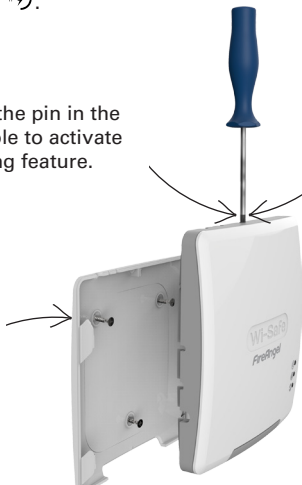
# INSTALLATION INSTRUCTIONS

---

1. The Gateway is designed to stand freely or be permanently secured to a wall.
2. Connect Ethernet cable here .
3. Connect Power cable here .

Remove the pin in the centre hole to activate the locking feature.

Break the three plastic knockouts loose. Use the supplied plastic anchors and screws.



To remove the Gateway: Insert a screwdriver into the hole until it stops, releasing the lock. Slide the Gateway up to remove it.

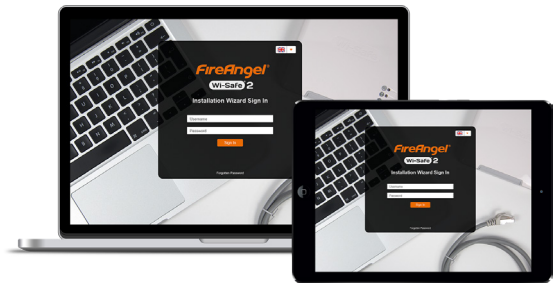
---

Make a note of the MAC address prior to permanent installation as you will need this when activating the Gateway for the first time.

# SETTING UP THE WI-SAFE GATEWAY

---

1. Obtain log-in details from your account administrator/ distributor.
2. Access the installation Wizard: [www.wi-safeconnect.com](http://www.wi-safeconnect.com)
3. Follow the online installation instructions.



[www.wi-safeconnect.com](http://www.wi-safeconnect.com)

The WG-1 Gateway allows for all devices utilising Wi-Safe 2 wireless communication to connect to the internet. The diagnostic information held within an individual WS2 device is sent directly to a personalised cloud based dashboard, where alerts can be managed and responses initiated.

---

**Please note:** an internet connection is required when setting up an alarm network for the first time, in conjunction with the Gateway.

# LIMITATIONS

---

The Wi-Safe 2 protocol is not a life safety protocol and should not be relied upon for life safety. If your internet connection is lost, communication from the WG-1T (i.e. to cloud or mobile devices) may not be possible. The local alarm network will still continue to operate as a stand-alone system and does not rely on an internet connection to do so.

# WARRANTY

---

For information on individual alarm warranty please refer to the main alarm manual.

Sprue Safety Products Ltd warrants to the original purchaser that its enclosed WG-1T to be free from defects in materials and workmanship under normal residential use and service for a period of 2 (two) year from the date of purchase. Provided it is returned with proof of purchase date, Sprue Safety Products Ltd hereby warrants that during the 2 (two) year period commencing from the date of purchase Sprue Safety Products Ltd, at its discretion, agrees to replace the unit free of charge.

The warranty on any replacement WG-1T, will last for the remainder of the period of the original warranty in respect of the wireless module originally purchased – that is from the date of original purchase and not from the date of receipt of the replacement product.

Sprue Safety Products Ltd reserves the right to offer an alternative product similar to that being replaced if the original model is no longer available or in stock. This warranty applies to the original retail purchaser from the date of original retail purchase and is not transferable. Proof of purchase is required. This warranty does not cover damage resulting from accident, misuse, disassembly, abuse or lack of reasonable care of the product, or applications not in accordance with the user manual. It does not cover events and conditions outside of Sprue Safety Products Ltd's control, such as Acts of God (fire, severe weather etc.). It does not apply

to retail stores, service centres or any distributors or agents. Sprue Safety Products Ltd will not recognise any changes to this warranty by third parties.

Sprue Safety Products Ltd shall not be liable for any incidental or consequential damages caused by the breach of any expressed or implied warranty. Except to the extent prohibited by applicable law, any implied warranty of merchantability or fitness for a particular purpose is limited in duration for 2 (two) year. This warranty does not affect your statutory rights. Except for death or personal injury, Sprue Safety Products Ltd shall not be liable for any loss of use, damage, cost or expense relating to this product or for any indirect or consequential loss, damages or costs incurred by you or any other user of this product.

# DISPOSAL

---

Waste electrical products should not be disposed of with your other household waste, but within the waste electronic and electrical equipment (WEEE) recycling scheme.

**WARNING:** Do not attempt to disassemble. Do not burn or dispose of in fire.

# TECHNICAL SPECIFICATION

---

The WG-1T gateway is designed to be installed in conjunction with Wi-Safe 2 (protocol) compatible devices. For more information visit [www.wi-safeconnect.com](http://www.wi-safeconnect.com).

230V Mains Powered, 5V DC, 1.5A

## **Independently tested to:**

EN 301 220-2 V 2.4.1

EN 301 489-3 V 1.6.1

EN 301 489-1 V 1.9.2

Manufacturer: Sprue Safety Products Ltd, Vanguard Centre, Sir William Lyons Rd, Coventry, CV4 7EZ, UK

For more information visit:  
**[www.wi-safeconnect.com](http://www.wi-safeconnect.com)**

 A **Sprue** Brand

**Sprue Safety Products Ltd.**

Vanguard Centre, Coventry CV4 7EZ UK



GN4511R2